

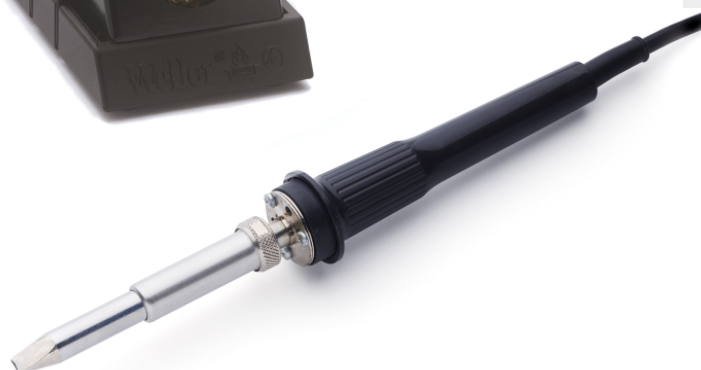
WP 200 Set

Code No.: T0052920099N



Benefits

- 200 W, 24 V
- High Power soldering iron. Ideal for applications with a high temperature demand e.g. LED backpanels or HF shieldings.



In addition we recommend:



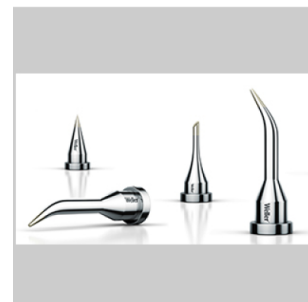
Fume extraction devices



Preheating plates



Cleaning Consumables



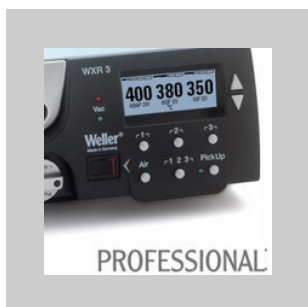
Soldering Tips



Technical Data

Active Tip Heating element technology	---
Power Response Heating element technology	on
Silver Line Heating element technology	---
Voltage	24 V
Heating output	200 W
Tip family	XHT
Power unit	WR 2, WR 3M, WR 3ME
WX compatible	---
Temperature range °C	50 - 550
Temperature range °F	150 - 950
Heat-up time	18
Safety rest	WDH 31 (T0051515899)
Safety rest (optional)	WDH 31 (T0051515899)
Barrel	---
Integrated tip extraction	---

Owning the bench



PROFESSIONAL



FILTRATION



EREM



XCELITE